



# *Pioneers in World Class MATS & FLOORING*

*Industry | Agricultural | Speciality  
Food Service | Entrance | Sports & Leisure*



**RICHARD PIERIS EXPORTS PLC**



[rpesales@arpico.com](mailto:rpesales@arpico.com)



[www.arpicorubber.com](http://www.arpicorubber.com)



+94 11 4834150

## **About RPE**

*Richard Pieris Exports PLC (RPE) pioneered the manufacture and export of Rubber mats for numerous applications with highest quality standards also RPE manufacture a range of rubber products including food grade jar sealing rings, crutch tips, rubber shoe soles and specialized rubber products for the US, European and the Asia Pacific markets from its inception since 1983. Richard Pieris Exports is a subsidiary of Richard Pieris & Company Limited (ARPICO), one of the largest and most diversified blue chip corporate entities in Sri Lanka.*

*Richard Pieris Exports rubber mats range mainly divided in six product categories. Entrance mats, Food Services Mats, Agricultural Mats, Sports & Leisure Mats, Industry Mats and Specialty mats. Specialty mats includes Fire retardant mats, Electrical Safety mats, Anti-static mats & Anti-Microbial mats for all of which conforms to the international standards. Test certificates have been obtained from laboratories in UK & Germany. At present, RPE export 300 types of rubber mats of various colors, hardness, thickness, sizes, uses and applications.*

*RPE is a ISO 9001 2015 certified company and have obtained number of certification and awards during its journey over three decades.*



**Group web**  
[www.arpico.com](http://www.arpico.com)

# Product Category

<i>Industry Mats</i>	07 - 22
<i>Agricultural Mats</i>	23 - 29
<i>Speciality Mats</i>	30 - 32
<i>Food Service Mats</i>	33 - 44
<i>Entrance Mats</i>	45 - 48
<i>Sports &amp; Leisure Mats</i>	49 - 53



# Application Icons



**CHILDREN INDOOR PLAY AREAS**



**GYMNAZIUMS**



**ICE SKATING RINKS**



**OFFICES**



**WAREHOUSES**



**DISTRIBUTION CENTERS**



**CATTLE SHEDS**



**HORSE SHEDS**



**CATTLES & HORSE TRANSPORTING VEHICLES**



**WORKSTATIONS**



**PATH WAYS**



**FACTORY FLOORS**



**HEAVY DUTY APPLICATIONS**



**KITCHENS**



**LABORATORIES**



**ANY OIL SPILLAGE AREAS**



**ASSEMBLY LINES**



**ELECTRICAL EQUIPMENT**



**TRANSFORMERS FROM HIGH VOLTAGE**



**INTERNAL & EXTERNAL USES**



# Feature Icons



**GENERAL PURPOSE**



**OIL/GREASE RESISTANT**



**OIL/GREASE PROOF**



**FRY -PROOF**



**ELECTRICAL RESISTANT**



**SKATE RESISTANT**



**ANTI-SLIP**



**ANTI-FATIGUE**



**DIRT TRAP**



**OPEN BOTTOM**



**MIDDLE MAT WITHOUT BUILT-IN RAMPS**



**END MAT WITHOUT BUILT-IN RAMPS**



**SINGLE MAT WITH BUILT-IN RAMPS**



**MIDDLE MAT WITH BUILT-IN RAMPS**



**END MAT WITH BUILT-IN RAMPS**



**CORNER MAT WITH RAMPS**



**CONNECTORS**



**OPTIONAL SIDE RAMPS**



**OPTIONAL YELLOW RAMPS**



**YELLOW CORNER PIECE FOR RAMP**



**GROVED SURFACE**



**SPIKE SURFACE**



**SINGLE MAT WITHOUT BUILT-IN RAMPS**



**SOLID TOP SURFACE**

# Code Description

## APPLICATION TYPE

- A - ANTISTATIC
- B - BFL / S1
- C - CFL / S1
- E - ELECTRICAL SHOCK PROOF
- F - FRY PROOF (100% NITRILE)
- G - GENERAL PURPOSE
- P - OIL / GREASE PROOF (75% NITRILE)
- R - OIL / GREASE RESISTANT (25% NITRILE)

## EDGE OF THE MAT

- S - STRAIGHT EDGE
- R - BUILT IN RAMP

## COLOR CHART

- |    |            |    |          |
|----|------------|----|----------|
| BK | - BLACK    | GY | - GREY   |
| BR | - BROWN    | YE | - YELLOW |
| RD | - RED      | BL | - BLUE   |
| BG | - BURGUNDY | GN | - GREEN  |

# MSG80-SRBK YF

## ADDITIONAL FEATURES

- |    |                     |    |                 |
|----|---------------------|----|-----------------|
| YF | - YOGA FLEX         | LP | - LARGE PUNCHED |
| AM | - ANTI MICROBIOLOGY | SP | - SMALL PUNCHED |
| YR | - YELLOW RAMP       | MV | - MOUNTVILLE    |
| CR | - CUT RESISTANT     | SC | - SUCTION CAP   |
| UP | - UN PUNCHED        |    |                 |

MOLD DESIGN

## COMPOUND TYPE

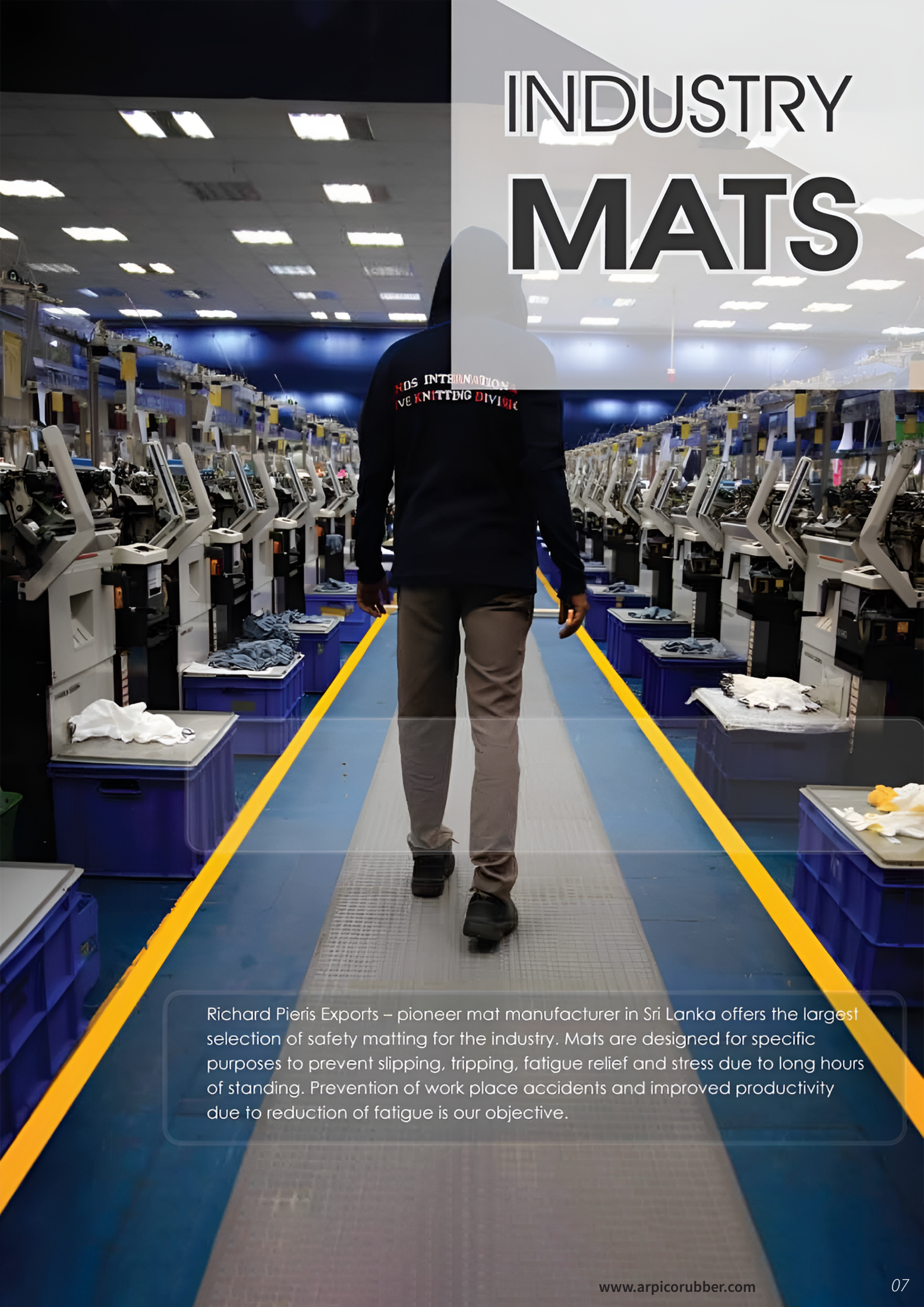
- MS - STANDARD COMPOUND
- MFR - FIRE RETARDANT COMPOUND
- MSL - LOW HARDNESS COMPOUND

## TYPE OF THE MAT

- |   |                      |    |                   |
|---|----------------------|----|-------------------|
| S | - SINGLE MAT         | H  | - HALF SIZE MAT   |
| Q | - QUARTER SIZE MAT   | C  | - CORNER MAT      |
| M | - MIDDLE MAT         | X  | - THINNER VERSION |
| T | - ONE THIRD SIZE MAT | HD | - HEAVY DUTY      |
| E | - END MAT            |    |                   |



# INDUSTRY MATS



Richard Pieris Exports – pioneer mat manufacturer in Sri Lanka offers the largest selection of safety matting for the industry. Mats are designed for specific purposes to prevent slipping, tripping, fatigue relief and stress due to long hours of standing. Prevention of work place accidents and improved productivity due to reduction of fatigue is our objective.



# Arpi Comfort Link *Anti - fatigue Mat with beveled edges*



## Applications



## Available Colours

Black

Terra cotta

Dark Grey

## Features



Product Name	Dimension		Pcs per Pallet	Pcs per 20 FCL
	Feet	Centimeters		
End mat	2'6" x 2'3"	78 x 70	320	2740
Middle mat	2'6" x 2'3"	78 x 70	320	2740
Single mat	2'6" x 2'3"	78 x 70	320	2740

### Product Features :

- Manufactured using different Nitrile formulations to withstand oily and greasy surfaces
  - 25% Nitrile – Mild contact with oils
  - 75% Nitrile – Intermittent contact with oils
  - 100% Nitrile – Continuous contact with oils
- Suitable for moderate temperature environments
- Interlocking modules or single mats are available

INDUSTRY MATS

## Available sizes & other information

Item Code	Dimension		Material	Colour
	Feet	Centimeters		
MSG30-ERBK	2'6" x 2'3"	78 x 70	100% Natural Rubber	Black
MSG30-MRBK	2'6" x 2'3"	78 x 70	100% Natural Rubber	Black
MSG30-SRBK	2'6" x 2'3"	78 x 70	100% Natural Rubber	Black
MSG33-ERBK	2'6" x 2'3"	78 x 70	100% Natural Rubber	Black
MSG33-ERGY	2'6" x 2'3"	78 x 70	100% Natural Rubber	Dark grey
MSG33-ERRD	2'6" x 2'3"	78 x 70	100% Natural Rubber	Terra cotta
MSR33-ERBK	2'6" x 2'3"	78 x 70	25% Nitrile Blend with Natural Rubber	Black
MSR33-ERGY	2'6" x 2'3"	78 x 70	25% Nitrile Blend with Natural Rubber	Dark grey
MSR33-ERRD	2'6" x 2'3"	78 x 70	25% Nitrile Blend with Natural Rubber	Terra cotta
MSG33-MRBK	2'6" x 2'3"	78 x 70	100% Natural Rubber	Rubber Black
MSG33-MRGY	2'6" x 2'3"	78 x 70	100% Natural Rubber	Dark grey
MSG33-MRRD	2'6" x 2'3"	78 x 70	100% Natural Rubber	Terra Cotta
MSR33-MRBK	2'6" x 2'3"	78 x 70	25% Nitrile Blend with Natural Rubber	Black
MSR33-MRGY	2'6" x 2'3"	78 x 70	25% Nitrile Blend with Natural Rubber	Dark grey
MSR33-MRRD	2'6" x 2'3"	78 x 70	25% Nitrile Blend with Natural Rubber	Terra Cotta
MSG33-SRBK	2'6" x 2'3"	78 x 70	100% Natural Rubber	Black
MSG33-SRGY	2'6" x 2'3"	78 x 70	100% Natural Rubber	Dark grey
MSG33-SRRD	2'6" x 2'3"	78 x 70	100% Natural Rubber	Terra Cotta
MSR33-SRBK	2'6" x 2'3"	78 x 70	25% Nitrile Blend with Natural Rubber	Black
MSR33-SRGY	2'6" x 2'3"	78 x 70	25% Nitrile Blend with Natural Rubber	Dark grey
MSR33-SRRD	2'6" x 2'3"	78 x 70	25% Nitrile Blend with Natural Rubber	Terra Cotta

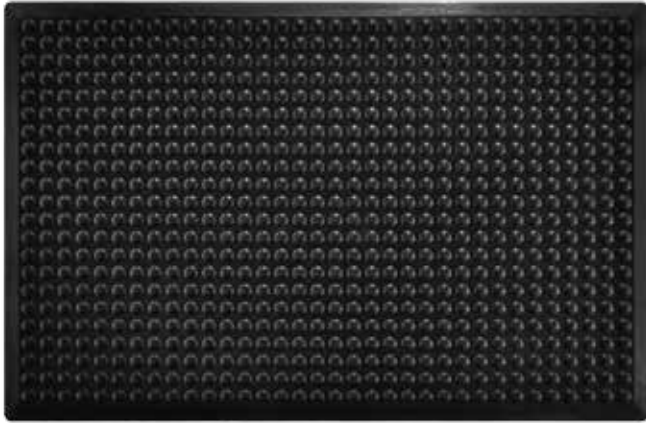
INDUSTRY MATS

## Arpi Comfort Link

Anti - fatigue Mat with beveled edges

# Arpi Flex Link

## Anti-Fatigue Solid Top Mat



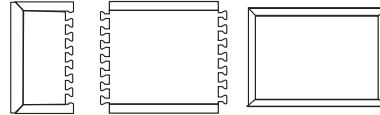
### Applications



### Available Colours

Black

Dark Grey



### Features



Product Name	Dimension		Pcs per Pallet	Pcs per 20 FCL
	Feet	Centimeters		
End mat	2'6" x 1'	30 x 80	750	7500
Middle mat	2'6" x 2'	65 x 80	305	2635
Single mat	3' x 2'	90 x 60	310	2635

### Product Features :

- Manufactured using different Nitrile formulations to withstand oily and greasy surfaces
  - 25% Nitrile – Mild contact with oils
  - 75% Nitrile – Intermittent contact with oils
  - 100% Nitrile – Continuous contact with oils
- Suitable for moderate temperature environments
- Ergonomically designed to reduce fatigue and stress at the work stations
- Interlocking mats for passages / single mats for work stations are available

INDUSTRY MATS



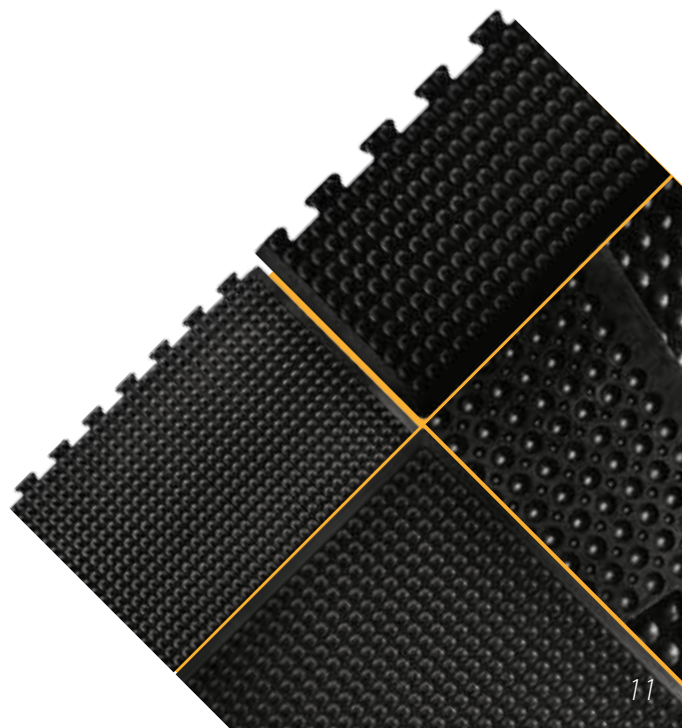
## Available sizes & other information

Item Code	Dimension		Material	Colour
	Feet	Centimeters		
MSG80-ERBK	2'6" x 1'	30 x 80	100% Natural Rubber	Black
MSG80-ERGY	2'6" x 1'	30 x 80	100% Natural Rubber	Dark Grey
MSF80-ERBK	2'6" x 1'	30 x 80	100% Nitrile Rubber	Black
MSF80-ERGY	2'6" x 1'	30 x 80	100% Nitrile Rubber	Dark Grey
MSP80-ERBK	2'6" x 1'	30 x 80	75% Nitrile Blend with Natural Rubber	Black
MSP80-ERGY	2'6" x 1'	30 x 80	75% Nitrile Blend with Natural Rubber	Dark Grey
MSR80-ERBK	2'6" x 1'	30 x 80	25% Nitrile Blend with Natural Rubber	Black
MSR80-ERGY	2'6" x 1'	30 x 80	25% Nitrile Blend with Natural Rubber	Dark Grey
MSG80-MRBK	2'6" x 2'	65 x 80	100% Natural Rubber	Black
MSG80-MRGY	2'6" x 2'	65 x 80	100% Natural Rubber	Dark Grey
MSF80-MRBK	2'6" x 2'	65 x 80	100% Nitrile Rubber	Black
MSF80-MRGY	2'6" x 2'	65 x 80	100% Nitrile Rubber	Dark Grey
MSP80-MRBK	2'6" x 2'	65 x 80	75% Nitrile Blend with Natural Rubber	Black
MSP80-MRGY	2'6" x 2'	65 x 80	75% Nitrile Blend with Natural Rubber	Dark Grey
MSR80-MRBK	2'6" x 2'	65 x 80	25% Nitrile Blend with Natural Rubber	Black
MSR80-MRGY	2'6" x 2'	65 x 80	25% Nitrile Blend with Natural Rubber	Dark Grey
MSG80-SRBK	3' x 2'	90 x 60	100% Natural Rubber	Black
MSG80-SRGY	3' x 2'	90 x 60	100% Natural Rubber	Dark Grey
MSF80-SRBK	3' x 2'	90 x 60	100% Nitrile Rubber	Black
MSF80-SRGY	3' x 2'	90 x 60	100% Nitrile Rubber	Dark Grey
MSP80-SRBK	3' x 2'	90 x 60	75% Nitrile Blend with Natural Rubber	Black
MSP80-SRGY	3' x 2'	90 x 60	75% Nitrile Blend with Natural Rubber	Dark Grey
MSR80-SRBK	3' x 2'	90 x 60	25% Nitrile Blend with Natural Rubber	Black
MSR80-SRGY	3' x 2'	90 x 60	25% Nitrile Blend with Natural Rubber	Dark Grey

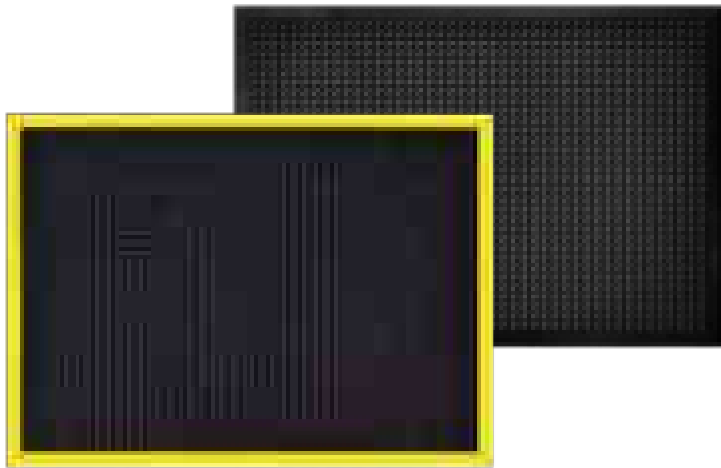
INDUSTRY MATS

## Arpi Flex Link Anti-Fatigue Solid Top Mat

[www.arpicorubber.com](http://www.arpicorubber.com)



# Bubble Mat *Anti Fatigue Solid Top Single Mat with beveled edges*



Applications



Available Colours

Black

Features



Product Name	Dimension		Pcs per Pallet	Pcs per 20 FCL
	Feet	Centimeters		
Single mat	4' x 3'	120 x 90	175	1800

## Product Features :

- Manufactured using different Nitrile formulations to withstand oily and greasy surfaces
  - 25% Nitrile – Mild contact with oils
  - 75% Nitrile – Intermittent contact with oils
  - 100% Nitrile – Continuous contact with oils
- Suitable for moderate temperature environments
- Mats available with yellow bevelled edges for better visibility
- Softer version also available on request



## Available sizes & other information

Item Code	Dimension		Material	Colour
	Feet	Centimeters		
MSG85-SRBK	4' x 3'	120 x 90	100% Natural Rubber	Black with Black ramp
MSF85-SRBK	4' x 3'	120 x 90	100% Nitrile Rubber	Black with Black ramp
MSP85-SRBK	4' x 3'	120 x 90	75% Nitrile Blend with Natural Rubber	Black with Black ramp
MSR85-SRBK	4' x 3'	120 x 90	25% Nitrile Blend with Natural Rubber	Black with Black ramp
MSG86-SRBK	4' x 3'	120 x 90	100% Natural Rubber	Black with Black ramp
MSF86-SRBK	4' x 3'	120 x 90	100% Nitrile Rubber	Black with Black ramp
MSP86-SRBK	4' x 3'	120 x 90	75% Nitrile Blend with Natural Rubber	Black with Black ramp
MSR86-SRBK	4' x 3'	120 x 90	25% Nitrile Blend with Natural Rubber	Black with Black ramp
MSG86-SRBKYR	4' x 3'	120 x 90	100% Natural Rubber	Black with Yellow ramp
MSF86-SRBKYR	4' x 3'	120 x 90	100% Nitrile Rubber	Black with Yellow ramp
MSP86-SRBKYR	4' x 3'	120 x 90	75% Nitrile Blend with Natural Rubber	Black with Yellow ramp
MSR86-SRBKYR	4' x 3'	120 x 90	25% Nitrile Blend with Natural Rubber	Black with Yellow ramp

INDUSTRY MATS

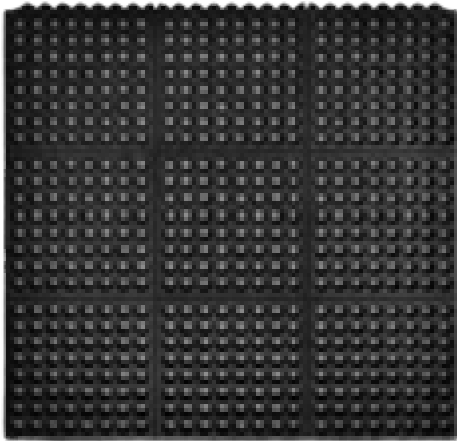
## Bubble Mat

### Anti Fatigue Solid Top Single Mat with beveled edges



# Arpi Open Top

## Anti Fatigue Open Bottom



### Applications



### Available Colours

Black

Terra cotta

Dark Grey

### Features



Product Name	Dimension		Pcs per Pallet	Pcs per 20 FCL
	Feet	Centimeters		
Arpi Open Top	3' x 3'	90 x 90	150	2000

### Product Features :

- Manufactured using different Nitrile formulations to withstand oily and greasy surfaces.
  - 25% Nitrile – Mild contact with oils
  - 75% Nitrile – Intermittent contact with oils
  - 100% Nitrile – Continuous contact with oils
- Ergonomically designed to reduce fatigue and stress at the work stations
- The high resilient rubber improves anti-fatigue reduces stress providing optimal comfort
- Length wise & width wise matting solutions
- Facilitates easy installation & removal
- Light weight for easy handing & Cleaning

INDUSTRY MATS

## Available sizes & other information

Item Code	Dimension		Material	Colour
	Feet	Centimeters		
MSG45-ESBK	3' x 3'	90 x 90	100% Natural Rubber	Black
MSG45-ESRD	3' x 3'	90 x 90	100% Natural Rubber	Tera cotta
MSG45-ESGY	3' x 3'	90 x 90	100% Natural Rubber	Dark Grey
MSF45-ESBK	3' x 3'	90 x 90	100% Nitrile Rubber	Black
MSF45-ESRD	3' x 3'	90 x 90	100% Nitrile Rubber	Tera cotta
MSF45-ESGY	3' x 3'	90 x 90	100% Nitrile Rubber	Dark Grey
MSP45-ESBK	3' x 3'	90 x 90	75% Nitrile Blend with Natural Rubber	Black
MSP45-ESRD	3' x 3'	90 x 90	75% Nitrile Blend with Natural Rubber	Tera cotta
MSP45-ESGY	3' x 3'	90 x 90	75% Nitrile Blend with Natural Rubber	Dark Grey
MSR45-ESBK	3' x 3'	90 x 90	25% Nitrile Blend with Natural Rubber	Black
MSR45-ESRD	3' x 3'	90 x 90	25% Nitrile Blend with Natural Rubber	Tera cotta
MSR45-ESGY	3' x 3'	90 x 90	25% Nitrile Blend with Natural Rubber	Dark Grey

INDUSTRY MATS

**Arpi Open Top**  
**Anti Fatigue Open Bottom**

# Arpi Solid Top Mats Anti Fatigue Solid Top



## Applications



## Available Colours

Black

Terra cotta

Dark Grey

## Features



Product Name	Dimension		Pcs per Pallet	Pcs per 20 FCL
	Feet	Centimeters		
Arpi Solid Top	3' x 3'	90 x 90	150	2000

### Product Features :

- Manufactured using different Nitrile formulations to withstand oily and greasy surfaces
  - 25% Nitrile – Mild contact with oils
  - 75% Nitrile – Intermittent contact with oils
  - 100% Nitrile – Continuous contact with oils
- Solid top mat provides a very comfortable anti-fatigue flooring
- Ergonomically designed to reduce fatigue and stress at the work station
- Individual mats can be moved and replaced with ease
- Optional bevelled edging in yellow for better visibility

INDUSTRY MATS





## Available sizes & other information

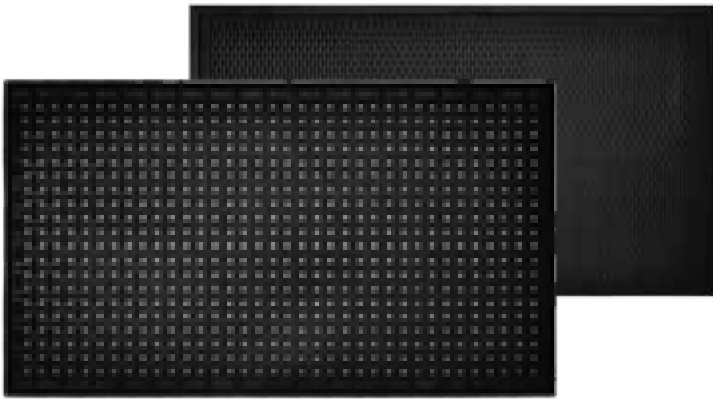
Item Code	Dimension		Material	Colour
	Feet	Centimeters		
MSG46-ESBK	3' x 3'	90 x 90	100 % Natural Rubber	Black
MSG46-ESRD	3' x 3'	90 x 90	100% Natural Rubber	Tera cotta
MSG46-ESGY	3' x 3'	90 x 90	100% Natural Rubber	Dark Grey
MSF46-ESBK	3' x 3'	90 x 90	100 % Nitrile Rubber	Black
MSF46-ESRD	3' x 3'	90 x 90	100% Nitrile Rubber	Tera cotta
MSF46-ESGY	3' x 3'	90 x 90	100% Nitrile Rubber	Dark Grey
MSP46-ESBK	3' x 3'	90 x 90	75 % Nitrile Blend with Natural Rubber	Black
MSP46-ESRD	3' x 3'	90 x 90	75 % Nitrile Blend with Natural Rubber	Tera cotta
MSP46-ESGY	3' x 3'	90 x 90	75 % Nitrile Blend with Natural Rubber	Dark Grey
MSR46-ESBK	3' x 3'	90 x 90	25 % Nitrile Blend with Natural Rubber	Black
MSR46-ESRD	3' x 3'	90 x 90	25 % Nitrile Blend with Natural Rubber	Tera cotta
MSR46-ESGY	3' x 3'	90 x 90	25 % Nitrile Blend with Natural Rubber	Dark Grey

INDUSTRY MATS

## Arpi Solid Top Mats

### Anti Fatigue Solid Top

# Arpi Laundry & Sponge



Applications



Available Colours

Black

Terra cotta

Features



Product Name	Dimension		Pcs per Pallet	Pcs per 20 FCL
	Feet	Centimeters		
Loungery Mat	5' x 3'	150 x 90	100	1500
Sponge Mat	5' x 3'	150 x 90	100	1400

## Product Features :

- Cushioned texture for comfort and fatigue relief
- Nitrile mats are machine washable
- Built in bevelled edges for safety
- Anti-slip design on wet surfaces

INDUSTRY MATS

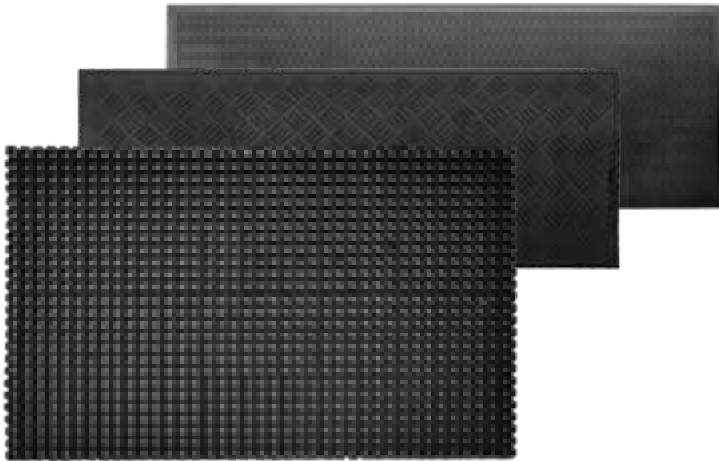
## Available sizes & other information

Item Code	Dimension		Material	Colour
	Feet	Centimeters		
MSG54-SRBK	5' x 3'	150 x 90	100% Natural Rubber	Black
MSG54-SRRD	5' x 3'	150 x 90	100% Natural Rubber	Tera cotta
MSG54-SRBR	5' x 3'	150 x 90	100% Natural Rubber	Brown
MSF54-SRBK	5' x 3'	150 x 90	100% Nitrile Rubber	Black
MSF54-SRRD	5' x 3'	150 x 90	100% Nitrile Rubber	Tera cotta
MSF54-SRBR	5' x 3'	150 x 90	100% Nitrile Rubber	Brown
MSP54-SRBK	5' x 3'	150 x 90	75% Nitrile Blend with Natural Rubber	Black
MSP54-SRRD	5' x 3'	150 x 90	75% Nitrile Blend with Natural Rubber	Tera cotta
MSP54-SRBR	5' x 3'	150 x 90	75% Nitrile Blend with Natural Rubber	Brown
MSR54-SRBK	5' x 3'	150 x 90	25% Nitrile Blend with Natural Rubber	Black
MSR54-SRRD	5' x 3'	150 x 90	25% Nitrile Blend with Natural Rubber	Brown
MSR54-SRBR	5' x 3'	150 x 90	25% Nitrile Blend with Natural Rubber	Tera cotta
MSF145-SRBK	5' x 3'	150 x 90	100% Nitrile Rubber	Black
MSF145-SRRD	5' x 3'	150 x 90	100% Nitrile Rubber	Tera cotta

INDUSTRY MATS

**Arpi Laundry & Sponge**

# Heavy Duty



## Applications



## Available Colours

Black

Terra cotta

## Features



Product Name	Dimension		Pcs per Pallet	Pcs per 20 FCL
	Feet	Centimeters		
Arpi Scrape	5' x 3' 3"	150 x 100	90	750
Octo Scrape- P2	5' x 3' 3"	150 x 100	95	750
Omini	8' x 3'	240 x 90	50	600
Z- mat	8' x 3'	240 x 90	50	600

### Product Features :

- Suitable for heavy duty industrial uses
- Provides slip-resistant and fatigue relief
- Raised circular surface gives excellent underfoot grip
- A comparable insulated alternative to cold hard floors

INDUSTRY MATS



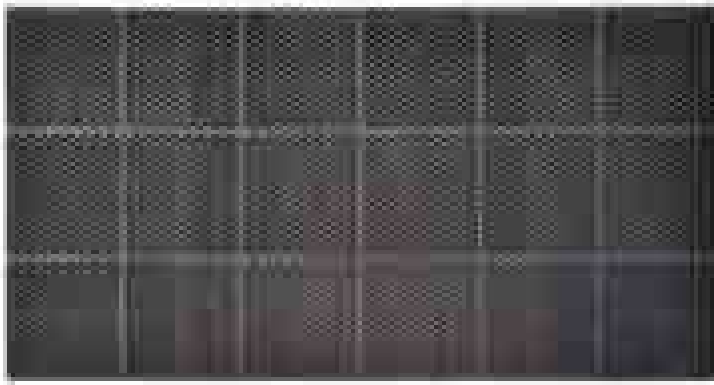
## Available sizes & other information

Item Code	Dimension		Material	Colour
	Feet	Centimeters		
MSG12-SSRD	5' x 3' 3"	150 x 100	100% Natural Rubber	Tera cotta
MSR12-SSBK	5' x 3' 3"	150 x 100	25% Nitrile Blend with Natural Rubber	Black
MSP12-SSBK	5' x 3' 3"	150 x 100	75% Nitrile Blend with Natural Rubber	Black
MSR12-SSRD	5' x 3' 3"	150 x 100	25% Nitrile Blend with Natural Rubber	Tera cotta
MSP12-SSRD	5' x 3' 3"	150 x 100	75% Nitrile Blend with Natural Rubber	Tera cotta
MSG12-XSBK	5' x 3' 3"	150 x 100	100% Natural Rubber	Black
MSG12-XSRD	5' x 3' 3"	150 x 100	100% Natural Rubber	Tera cotta
MSR12-XSBK	5' x 3' 3"	150 x 100	25% Nitrile Blend with Natural Rubber	Black
MSP12-XSBK	5' x 3' 3"	150 x 100	75% Nitrile Blend with Natural Rubber	Black
MSR12-XSRD	5' x 3' 3"	150 x 100	25% Nitrile Blend with Natural Rubber	Tera cotta
MSP12-XSRD	5' x 3' 3"	150 x 100	75% Nitrile Blend with Natural Rubber	Tera cotta
MSG69-SSRD	5' x 3' 3"	150 x 100	100% Natural Rubber	Tera cotta
MSR69-SSBK	5' x 3' 3"	150 x 100	25% Nitrile Blend with Natural Rubber	Black
MSP69-SSBK	5' x 3' 3"	150 x 100	75% Nitrile Blend with Natural Rubber	Black
MSR69-SSRD	5' x 3' 3"	150 x 100	25% Nitrile Blend with Natural Rubber	Tera cotta
MSP69-SSRD	5' x 3' 3"	150 x 100	75% Nitrile Blend with Natural Rubber	Tera cotta
MSG142-SRBK	8' x 3'	240 x 90	100% Natural Rubber	Black
MSG142-SRRD	8' x 3'	240 x 90	100% Natural Rubber	Tera cotta
MSR142-SRBK	8' x 3'	240 x 90	25% Nitrile Blend with Natural Rubber	Black
MSP142-SRBK	8' x 3'	240 x 90	75% Nitrile Blend with Natural Rubber	Black
MSR142-SRRD	8' x 3'	240 x 90	25% Nitrile Blend with Natural Rubber	Tera cotta
MSP142-SRRD	8' x 3'	240 x 90	75% Nitrile Blend with Natural Rubber	Tera cotta
MSG141-SRBK	8' x 3'	240 x 90	100% Natural Rubber	Black
MSG141-SRRD	8' x 3'	240 x 90	100% Natural Rubber	Tera cotta
MSR141-SRBK	8' x 3'	240 x 90	25% Nitrile Blend with Natural Rubber	Black
MSP141-SRBK	8' x 3'	240 x 90	75% Nitrile Blend with Natural Rubber	Black
MSR141-SRRD	8' x 3'	240 x 90	25% Nitrile Blend with Natural Rubber	Tera cotta
MSP141-SRRD	8' x 3'	240 x 90	75% Nitrile Blend with Natural Rubber	Tera cotta

INDUSTRY MATS

**Heavy Duty**

# Arpi Hive Open Bottom Single



## Applications



## Available Colours

Terra cotta

Brown

Black

## Features



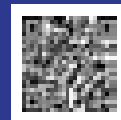
Product Name	Dimension		Pcs per Pallet	Pcs per 20 FCL
	Feet	Centimeters		
Bee Hive	6' x 3"	180 x 90	100	950

### Product Features :

- Manufactured using different Nitrile formulations to withstand oily and greasy surfaces
  - 25% Nitrile – Mild contact with oils
  - 75% Nitrile – Intermittent contact with oils
  - 100% Nitrile – Continuous contact with oils
- Honeycomb Design adds Anti-Slip Surface Provides product strength
- Light to Medium Applications
- Anti-Slip Surface Provides Safe Footing
- Excellent Drainage

INDUSTRY MATS





**Richard Pieris Exports PLC**

10, Raja Mawatha, Ekala, Ja-ela, Sri Lanka

[www.arpicorubber.com](http://www.arpicorubber.com)